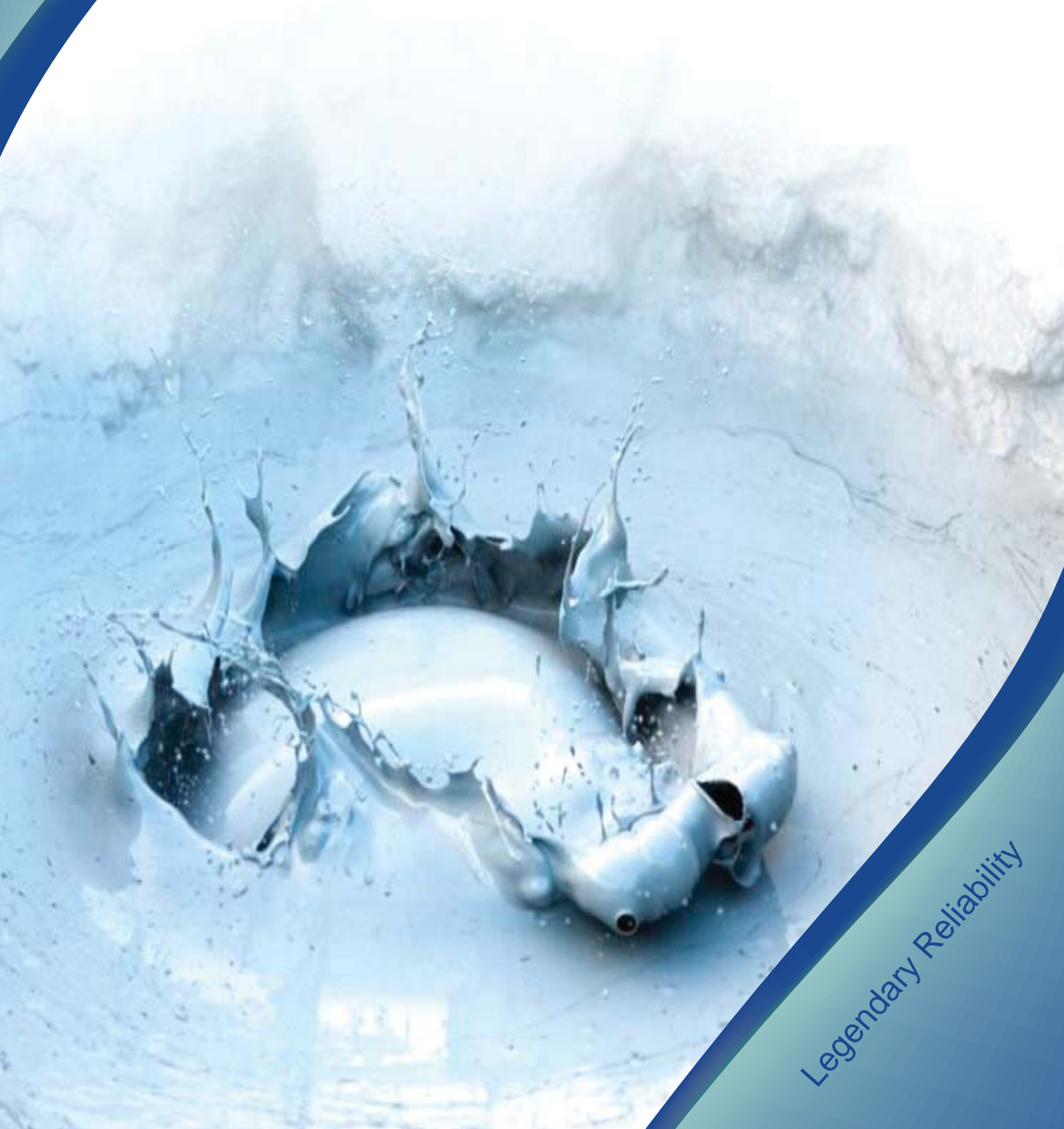


Progressing Cavity Pumps Delivery Program Overview



Legendary Reliability

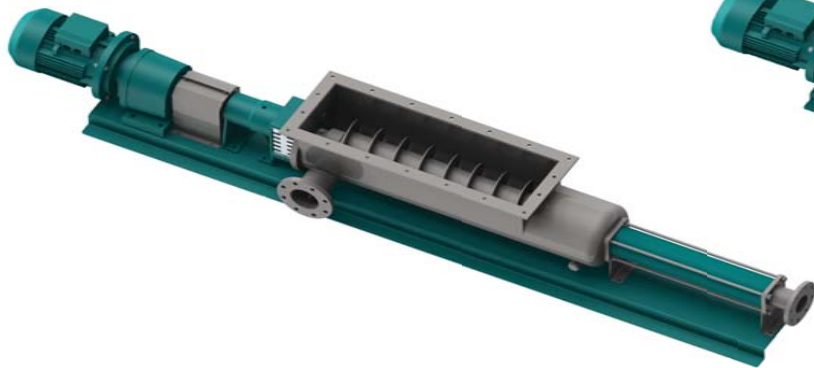
**FM-S & FM-C Range
Free Moulded Pump**

Compact and versatile
Capacity: up to 18.000 l/h
Pressure: up to 4 bar



**G Range
Large Hopper pump**

The G Range was especially developed
for pumping viscous and no fluidity products.
Capacity: up to 40 m3/h
Pressure: up to 48 bar



**K Range
Standard Pump**

The K Range is the state of the art
in manufacturing concepts
Capacity: up to 250 m³/h
Pressure: up to 48 bar



**M Range
Metering Pump**

The M Range is used for metering different kind of liquids.
High accuracy and low pulsation.
Capacity: from 3 l/h up to 200 l/h
Pressure: up to 18 - 24 - 36 bar



**W Range
Hopper Pump**

The W Range was especially developed
for pumping viscous products.
Capacity: from 500 l/h up to 80-100 m3/h
Pressure: up to 48 bar



**SMP Range
Fully Submersible Pump**

New development for undiscovered
market is held by Sydex during this period.
First size SMP25 soon available.



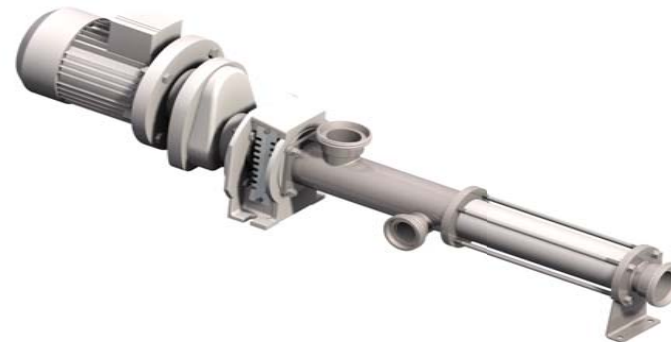
Integral Macerator Pump Unit

Safe and reliable grinder-macerator pump unit
with basic construction in both cast iron or stainless steel.
Flow rate : 1 l/sec
Pressure : 5 bar



**H Range
Hygienic pump**

The H Range is used mainly to apply in the food,
pharmaceutic and chemical industry.
Capacity: up to 100 m3/h
Pressure: up to 12 - 24 bar



WL Range

Wide hopper pumps used to transfer grapes / wine
Complete structure in SS.304 1.4304 material.
This range is basically developed in 4 different sizes:
WL 065 , 075 , 091 , 102 and 130
Capacity : from 10 to 90/100 m3/h
Pressure : up to 6 - 12 bar



**E Range
Vertical Pump**

The E Range was projected
to work in a vertical stance.
Capacity: up to 150 m3/h
Pressure: up to 12 bar
"Possible dedicated
pressure/flow level on demand"





HEAD OFFICE: **ITALY:** Sydex Srl
 Via Lord Baden Powell 24
 36045 Lonigo (VI) - Italia
 Tel. 0039 0444 432588
 Fax 0039 0444 432589
 Web site: www.sydexpump.com
 Email: info@sydexpump.com

BRANCH OFFICES: **UK:** Torqueflow Sydex - Fluid Management
 Unit 2CB Deer Park Farm Industrial Estate, Knowle Lane
 Horton Heath
 Hampshire
 SO50 7PZ
 United Kingdom

SINGAPORE: Sydex Singapore Pte Ltd
 35 Tannery Road, #05-06 Tannery Block
 Ruby Industrial Complex, Singapore 347740

PORTUGAL: Sydex Flow
 Equipamentos Electromecanicos, Lda.
 Avenida José Afonso, 77
 2840 - 735 Seixal

Your local authorized distributor:

ARCHER
 SEPARATION PROCESS

211-3030 Lincoln Ave, Coquitlam, BC V3B 6B4, CANADA
info@archerseparation.com · www.ArcherSeparation.com
 Phone: 604.484.4516 Fax: 604.464.4122



DNV-MUNO 0496